

Facts About Youth Marijuana Use

DID YOU KNOW?

Marijuana is the most abused drug in the United States, according to the National Institute on Drug Abuse.



About 1 in 10 marijuana users become addicted. For people who begin using younger than 18, that number rises to

1 in 6



The brain does not fully develop until the age of 25. If marijuana is introduced to the brain while it is still growing and developing, it increases risk for short-term and long-term negative outcomes.

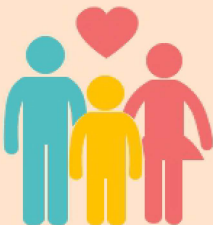
People who begin using marijuana before the age of 18 are more likely to develop a marijuana use disorder than adults. Among youth receiving substance use disorder treatment, marijuana accounts for the largest percentage of admissions – almost 50% among those 12 to 17 years old.



For more information on preventing youth marijuana use, please visit:

<https://www.justthinktwice.gov>

<https://www.teens.drugabuse.gov>



Sources:

http://www.friendsofnarconon.org/drug_distribution_in_the_united_states/texas_drug_facts/texas_factsheet/

<https://www.cdc.gov/marijuana/faqs/marijuana-addiction.html>

<https://preventionlane.org/health-effects-of-marijuana>

<https://www.drugabuse.gov/publications/marijuana-facts-parents-need-to-know/talking-to-your-kids-communicating-risks>